

How do I set switches for MSI type installers when installing PDF

**Viewer info in beginning (give background info) + PRO info below. PRO msi files on [www.pdf-xchange.se](http://www.pdf-xchange.se) "Nedladdning".**

**How do I set switches for MSI type installers when installing PDF-XChange Viewer?**

Symptoms

The normal usage of the MSI installer does not meet my requirements.

Cause

---

When deploying PDF-XChange viewer I require additional functionality for my MSI install.

Resolution

---

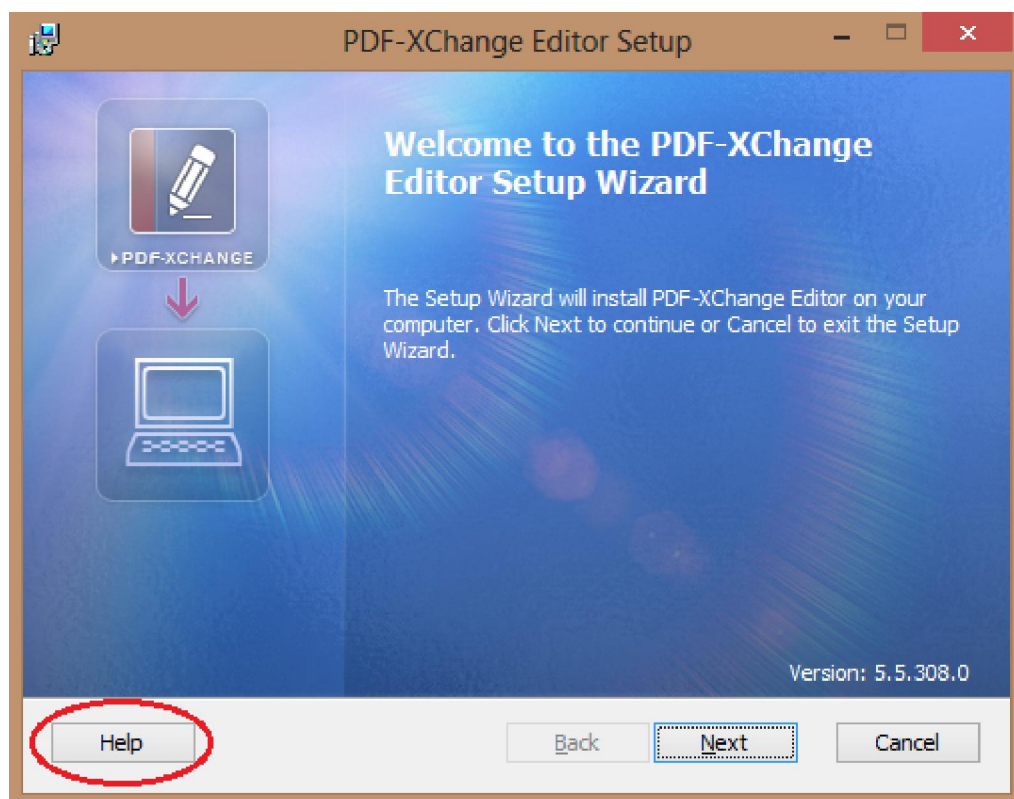
**msiexec /Option <Required Parameter> [Optional Parameter]**

There are msi installers for the PDF-XChange Editor, PDF-XChange Standard and the PDF-XChange Pro bundle. Each of these has slightly unique install options.

Note that the Editor has some [new switches](#) to handle the [new key paradigm as of build 308](#). All MSI installers have their switches and options detailed in a help file that is part of the installer.

This help file can be accessed using the Help button on the first screen of any of our msi installers or using the /? switch at the command line:

How do I set switches for MSI type installers when installing PDF



## How do I install products from the command line to use the new "Protected Keys" in place since build 308?

May 27, 2014 03:43 PM

### Symptoms

---

I have used the command line install option **KEY=<reg key>** but my license details are not passed to the product during install.

### Cause

---

As of build 308 we have changed the way we register licenses in our PDF products.

### Resolution

---

The new serial key paradigm includes a choice of activation methods, either using a string or a "vault" file.

### **Passing the key as a file:**

Use the option **KEYFILE=<xcvault file>** This is used to specify the UNC location of the

How do I set switches for MSI type installers when installing PDF

license vault file <filename>.xcvault.

e.g. KEYFILE="C:\Users\paul\Desktop\Personal.xcvault"

**Passing the key as a string:**

Use the option **KEYDATA=<regkey>** This is used to specify the registration key using a text string.

e.g. KEYDATA="PXP50-Y5EN...cFrBqnyKhv6eOw="

**Note** that this new key is literally hundreds of characters long and as such doesn't readily lend itself to being passed as a string at the command line, use of the KEYFILE is recommended.

\*\*\*\*\*

**PDF-XChange Build 308 Introduces new product secure serial protection system - End User Upgrade Guide.**

The upcoming release of Build 308 of our end user PDF-XChange product line introduces some significant changes to our licensing technology that will be made available to all users.

Currently when you make a successful purchase we pass back to you, via email, a serial number for you to forward to your client that is then copy/pasted into the installer to make the software 'live' and remove all evaluation restrictions as appropriate. In the past this has caused issues with users incorrectly typing serial numbers and also the current limited format length does not allow us to store any user data in the Serial key string such as owner or maintenance period etc.

The next release (Build 308) of all our end user products will be activated by these new, secure serial keys or if purchased through one of our registered resellers, you will receive an 'activation code'.

On installing a product for the first time users will copy/paste their, secure serial key, activation key or by double-clicking the included secure serial file.

The new serial key format is much larger than previously supplied and allows us to store information regarding the validated user, e-mail and maintenance period etc, hence the reason users will be supplied the serial number as a file and not just a string of characters - as copy/pasting is not ideal for such extended strings. Further if the user downloads and stores this file on their hard drive it can be simply 'double clicked' and it will perform the necessary activation without any need to start the application itself.

Additionally - any user downloading an update from our servers to their existing installation will

## How do I set switches for MSI type installers when installing PDF

be provided with an 100% automated update on starting the revised application - providing they have current and valid maintenance in place, making the entire process extremely simple and uncomplicated.

In the event the users maintenance has expired - the user will be warned prior to the installation that if they continue their installation will revert to trial mode and offered the option to cancel the installation of the update, extend their maintenance if possible online immediately - or continue and accept the evaluation restrictions that will apply should they continue.

Step by step instructions are provided within the articles below, for each possible situation broken into sections. Should you have any questions regarding the upgrading to or installation of the 308 builds of you product please don't hesitate to contact us.

### Command-line for installation is:

```
msiexec /Option <Required Parameter> [Optional Parameter] [PROPERTY=PropertyValue]
```

Possible options for msiexec are:

Options

Parameter

Definition

Install Options

```
/package
```

or

```
/i
```

<Product.msi> Installs or configures a product

```
/a
```

<Product.msi> Administrative install - Installs a product on the network

```
/j
```

```
<u|m>
```

<Product.msi> Advertises a product - m to all users, u to current user.

Additional parameters can be used:

```
[/t <Transform List>]
```

```
[/g <Language ID>]
```

```
/uninstall
```

```
|
```

```
/x
```

```
<Product>
```

Uninstall the product. Parameter can be .msi file or Product Code.

Display Options

```
/quiet
```

Quiet mode - Installs the application without user interaction

```
/passive
```

Unattended mode - progress bar only

```
/q
```

## How do I set switches for MSI type installers when installing PDF

[n|b|r|f]

Sets user interface level:

n

- no UI

b

- Basic UI

r

- Reduced UI

f

- Full UI (default)

Restart Options

/norestart

Do not restart after the installation is complete

/promptrestart

Prompts the user for restart if necessary

/forcerestart

Always restart the computer after installation

Logging Options

/l

<LogFile>

Defines logging level for installation. Possible modifiers are:

i

- Status messages

w

- Nonfatal warnings

e

- All error messages

a

- Start up of actions

r

- Action-specific records

u

- User requests

c

- Initial UI parameters

m

- Out-of-memory or fatal exit information

o

- Out-of-disk-space messages

p

- Terminal properties

v

- Verbose output

x

- Extra debugging information

+

- Append to existing log file

## How do I set switches for MSI type installers when installing PDF

```
!  
- Flush each line to the log  
*  
- Log all information, except for v and x options  
/log  
<LogFile>  
Equivalent for  
/l*  
<LogFile>  
Repair Options  
/f  
<Product>  
Repairs a product. Parameter is an .msi file or Product  
Code.  
May have the following modifiers:  
p  
- only if file is missing  
o  
- if file is missing or an older version is installed (default)  
e  
- if file is missing or an equal or older version is installed  
d  
- if file is missing or a different version is installed  
c  
- if file is missing or checksum does not match the calculated value  
a  
- forces all files to be reinstalled
```

How do I set switches for MSI type installers when installing PDF

## How do I set switches for MSI type installers when installing PDF

u

- all required user-specific registry entries (default)

m

- all required computer-specific registry entries (default)

s

- all existing shortcuts (default)

v

- runs from source and recaches local package

For additional options and more detailed description please refer to Microsoft Web Site  
**Properties**

Public properties defined by PDF-XChange installation may be specified as well as standard properties. For complete list of standard public properties please refer to:

[http://msdn.microsoft.com/en-gb/library/aa370905\(VS.85\).aspx](http://msdn.microsoft.com/en-gb/library/aa370905(VS.85).aspx)

Most useful properties are:

Standard Properties

ADDLOCAL

<list of features> The value of the

ADDLOCAL

property is a list of features that are

delimited by commas, and are to be installed locally. PDF-XChange

PRO installer defines the following features:

F\_Drivers

- components of PDF-XChange driver.

F\_Help\_Drv

- Help file for driver, OfficeAddin and Office2PDF. Requires

F\_Drivers

.

F\_Langs\_Drv

- Localization files for the Driver, OfficeAddin and Office2PDF. Requires

F\_Drivers

.

F\_Wizard

- PDF-Tools application.

F\_Help\_Wiz

- Help file for PDF-Tools. Requires

F\_Wizard

F\_Langs\_Wiz

- Language localization files for PDF-Tools. Requires

F\_Wizard

F\_Office2PDF

- components of Office2PDF. Requires

F\_Drivers

F\_OfficeAddin

- Addin for MS Office applications for converting documents to PDF.

Requires



## How do I set switches for MSI type installers when installing PDF

F\_Drivers

F\_IEAddin

- Addin for MS Internet Explorer which allows to convert web pages to PDF files.

F\_Viewer

- PDF-XChange Editor and main components.

F\_VLangs

- Localization files for the Editor. Requires

F\_Viewer

.

F\_Plugins

- Plugins modules for the Editor (requires F\_Viewer). If

F\_Plugins

is specified, the following features can be used to install plugins:

F\_Plugin\_SP

- to install SpellChecker plugin. Requires

F\_Plugins

F\_FileOpenPlugin

- install plugin that provide support for file secured by FileOpen.

Requires

F\_Plugins

F\_ReadOutLoudPlugin

- install the plugin that provides read out loud functionality.

Requires

F\_Plugins

F\_OCRPlugin

- install plugin that allow OCR image based PDF files in the Editor.

Requires

F\_Plugins

.

F\_BrowserPlugins

- plug-ins for web browsers (MS Internet explorer, Mozilla FireFox, Opera, Safari, and Chrome) which allows viewing PDF files inside these browsers. Requires

F\_Viewer

as well as

F\_IEPlugin

and/or

F\_NPPlugin

.

F\_IEPlugin

-

IE plugin. Requires

F\_BrowserPlugins

and

F\_Viewer

.

## How do I set switches for MSI type installers when installing PDF

F\_NPPlugin

- Firefox, Chrome, Safari and Opera plugin. Requires the use of

F\_BrowserPlugins

and

F\_Viewer

.

F\_ShellExt

- Plugins for Windows Explorer and Windows shell. These extensions allows to view PDF thumbnails into Windows Explorer, shows properties of PDF files, handling preview of PDF files into Windows Vista and Office 2007, provides IFilter component which allows Windows Desktop Search engine to make search inside PDF files;

INSTALLLOCATION

Specifies the folder where products will be installed.

## How do I set switches for MSI type installers when installing PDF

### Product specific properties

PNAME

<name>

Specifies the name of the printer which will be used. Default value is "PDF-XChange 4.0"

SET\_PRINTER\_AS\_DEFAULT

If specified and has value of "1", PDF-XChange printer will be set as default printer after installation. If not specified, PDF-XChange printer will not be set as default.

SET\_AS\_DEFAULT

## How do I set switches for MSI type installers when installing PDF

If not specified or specified and has value of "1", PDF-XChange Editor will be set as default application for PDF files.

### VIEWER\_IN\_BROWSERS

If not specified or specified and has value of "1", PDF-XChange Editor will be configured to open PDF files inside browsers.

### DESKTOP\_SHORTCUTS

If not specified or specified and has value of "1" installer will place shortcuts for installed application on Desktop.

### PROGRAMSMENU\_SHORTCUTS

If not specified or specified and has value of "1" installer will create program menu group for installed application and their components.

### USERNAME

<username>

Specifies the username for which applications will be registered.

### ORGANIZATION

<oname>

Specifies the organization name for which applications will be registered.

### USERMAIL

<email>

Specifies the user email.

### KEYFILE

<xcvault file> Specifies the UNC location of the license vault file  
<filename>.xcvault.

### KEYDATA

<regkey>

Specifies registration key.

### EDITOR\_LANGUAGE

<id>\*

Specifies a language for the Editor. Requires

F\_Vlangs

### DDEFLANGID

<id>\*\*

Specifies a language for the print driver. Requires

F\_Langs\_Drv

### PDEFLANGID

<id>\*\*

Specifies a language for PDF-Tools. Requires

F\_Langs\_Wiz

\* <id> for your target language can be found here:

[http://msdn.microsoft.com/en-us/library/ee825488\(v=cs.20\).aspx](http://msdn.microsoft.com/en-us/library/ee825488(v=cs.20).aspx)

The "Language Culture Name" is used with

EDITOR\_LANGUAGE

## How do I set switches for MSI type installers when installing PDF

. - E.g. for German use

de-DE

\*\* <id> for your target language can be found here:

[http://msdn.microsoft.com/en-us/library/ee825488\(v=cs.20\).aspx](http://msdn.microsoft.com/en-us/library/ee825488(v=cs.20).aspx)

Use the "Culture Code" for

DDEFLANGID and PDEFLANGID.

It is in hexadecimal, it must be converted to

decimal for use. - E.g. for German use

1031

(1031 is decimal for the hex value 0x0407)

### Command-line Examples:

1.

Install the application in quiet mode (no user input) to folder "C:\Program Files\Trac  
msiexec /i PDFXC5Pro\_x64.msi /quiet INSTALLLOCATION="C:\Program Files\Tracker"

2.

Install the application in quiet mode to default folder. Specify the user license info  
as a string:

```
msiexec /i PDFXC5Pro_x64.msi /quiet USERNAME="John Smith" USERMAIL="abc@a.b.c"  
KEYDATA="PXP50-fgte.....+ZeuiMCiV3Vc6Z0A="
```

3.

Install the application in quiet mode to default folder. Specify the user license info  
as a vault file:

```
msiexec /i PDFXC5Pro_x64.msi /quiet USERNAME="John Smith" USERMAIL="abc@a.b.c"  
KEYFILE="\valid\UNC\path\to\vault\file.xcvault"
```

How do I set switches for MSI type installers when installing PDF